

**REFERENCE PLAN OF STATUTORY RIGHT OF WAY OF PARTS OF
LOTS 'A' AND 'B', BLOCK 'K', DISTRICT LOT 230, GROUP 1,
NEW WESTMINSTER DISTRICT, PLAN BCP _____**

PLAN BCP _____

DEPOSITED IN THE LAND TITLE OFFICE AT
NEW WESTMINSTER, B.C., THIS _____ DAY OF _____
20 _____

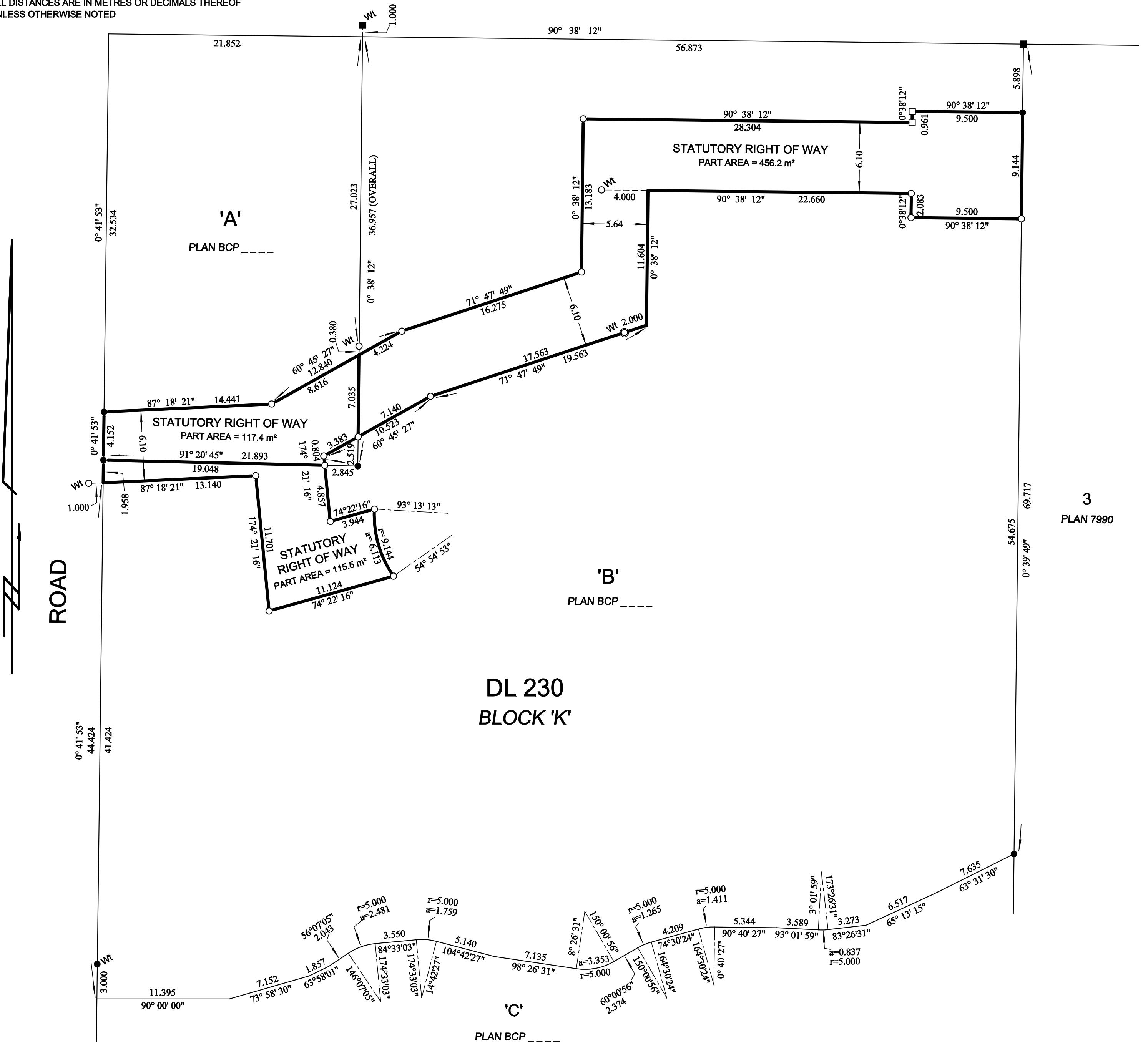
PURSUANT TO SECTION 99(1)(e) OF THE LAND TITLE ACT
BCGS 92G036

REGISTRAR



THE INTENDED PLOT SIZE OF THIS PLAN IS
432 mm IN WIDTH BY 560 mm IN HEIGHT (C SIZE)
WHEN PLOTTED AT A SCALE OF 1: 250
ALL DISTANCES ARE IN METRES OR DECIMALS THEREOF
UNLESS OTHERWISE NOTED

DOLLARTON HIGHWAY



**3
PLAN 7990**

**DL 230
BLOCK 'K'**

LEGEND

INTEGRATED SURVEY AREA No. 16
DISTRICT OF NORTH VANCOUVER (NAD 83)(CSRS)
GRID BEARINGS ARE DERIVED FROM PLAN BCP _____
THIS PLAN SHOWS HORIZONTAL GROUND-LEVEL DISTANCES,
EXCEPT WHERE OTHERWISE NOTED
TO COMPUTE GRID DISTANCES, MULTIPLY GROUND-LEVEL
DISTANCES BY COMBINED FACTOR 0.9995947

- DENOTES STANDARD IRON POST FOUND
- DENOTES STANDARD IRON POST PLACED
- DENOTES LEAD PLUG FOUND
- DENOTES LEAD PLUG PLACED
- Wt DENOTES WITNESS

NOTE
THIS PLAN SHOWS ONE OR MORE WITNESS POSTS WHICH
ARE NOT SET ON THE TRUE CORNER(S).

BOOK OF REFERENCE

DESCRIPTION	AREA
LOT 'A', BLOCK 'K', DL 230, PLAN BCP _____	117.4 m ²
PART LOT 'B', BLOCK 'K', DL 230, PLAN BCP _____	115.5 m ²
PART LOT 'B', BLOCK 'K', DL 230, PLAN BCP _____	456.2 m ²
TOTAL LOT 'B'	571.7 m²

THIS PLAN LIES WITHIN THE
GREATER VANCOUVER REGIONAL DISTRICT

I, A.K. WINTER, A BRITISH COLUMBIA LAND SURVEYOR, CERTIFY THAT
I WAS PRESENT AT AND PERSONALLY SUPERINTENDED THE SURVEY
REPRESENTED BY THIS PLAN, AND THAT THE SURVEY AND PLAN ARE CORRECT
THE FIELD SURVEY WAS COMPLETED ON THE 17TH DAY OF OCTOBER, 2011
THE PLAN WAS COMPLETED AND CHECKED, AND THE CHECKLIST FILED
UNDER #128774, ON THE 19TH DAY OF OCTOBER, 2011

AKW

B.C.L.S.

HOBBS, WINTER & MacDONALD,
B.C. LAND SURVEYORS,
113-828 HARBOURSIDE DRIVE,
NORTH VANCOUVER, B.C.. V7P 3R9
TEL 604-986-1371 FAX 604-986-5204
EMAIL: admin@hwmsurveys.com

3707-3739 DOLLARTON HIGHWAY
FB.2252 p.1-32 M 3044-09 NVD